


SPECIFICATIONS

Customer	Date : 2005. 10. 15.
	SPEC. NO. :
	PART CODE : TCXO-PB33L-20.000MHz

A. REQUIREMENTS

Model	TCXO
Size	CRM5032-4PB
Packing	
Marking	

Power	
Vcc	3.3+/- 0.165 V
Icc	5 mA max.

Waveform	
Output	Clipped Sine

Load	10Kohm // 10pF
Vpp	0.8 Vpp min
VH	
VL	
Tr	
Tf	
Symmetry	

Phase Noise	
10Hz	
100Hz	
1KHz	
10KHz	

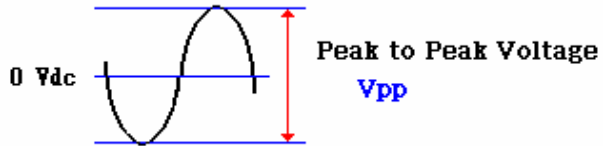
Frequency	
Pin 3	20.000MHz

Stability	
Overall	
Tolerance at 25 C	+/- 0.5ppm typ +/-2.5ppm max
Drift over Temp.	+/- 1.5ppm typ
Aging / 1yr	+/- 1.0ppm max
Aging / 5yrs	
Vcc Change	+/- 0.3ppm max
Load Change	+/- 0.3ppm max

Temperature Range	
Operating Temp.	-30~50 C
Storage Temp.	-40~90 C
Operable Temp.	

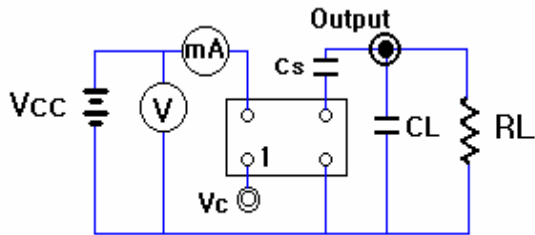
Control Option	
Enable	
Disable	
Vc (VCXO)	
Slope	
Pull Min.	
Pull Max.	
Linearity	
MBW	
Input-Z	
Trimmer Adj.	

B. Waveform



$$V_{pp} = 0.8 \text{ V Min.}$$

C. Test Circuit

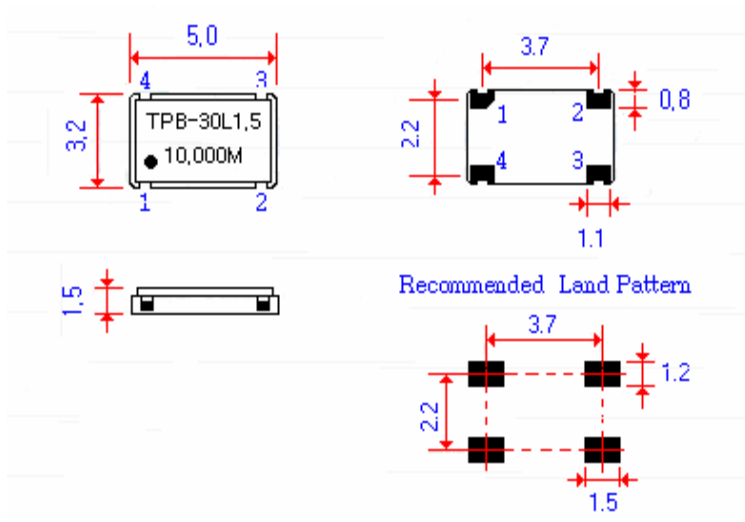


$C_s = 1\text{nF} \sim 10\text{nF}$
 $R_L = 10\text{Kohm}$
 $C_L = 10\text{pF}$

D. VCXO Pull Range

NA

E. Dimensions (in mm)



n No.

Pin Information

Content	
1	N.C.
2	GND
3	Output
4	Vdd

